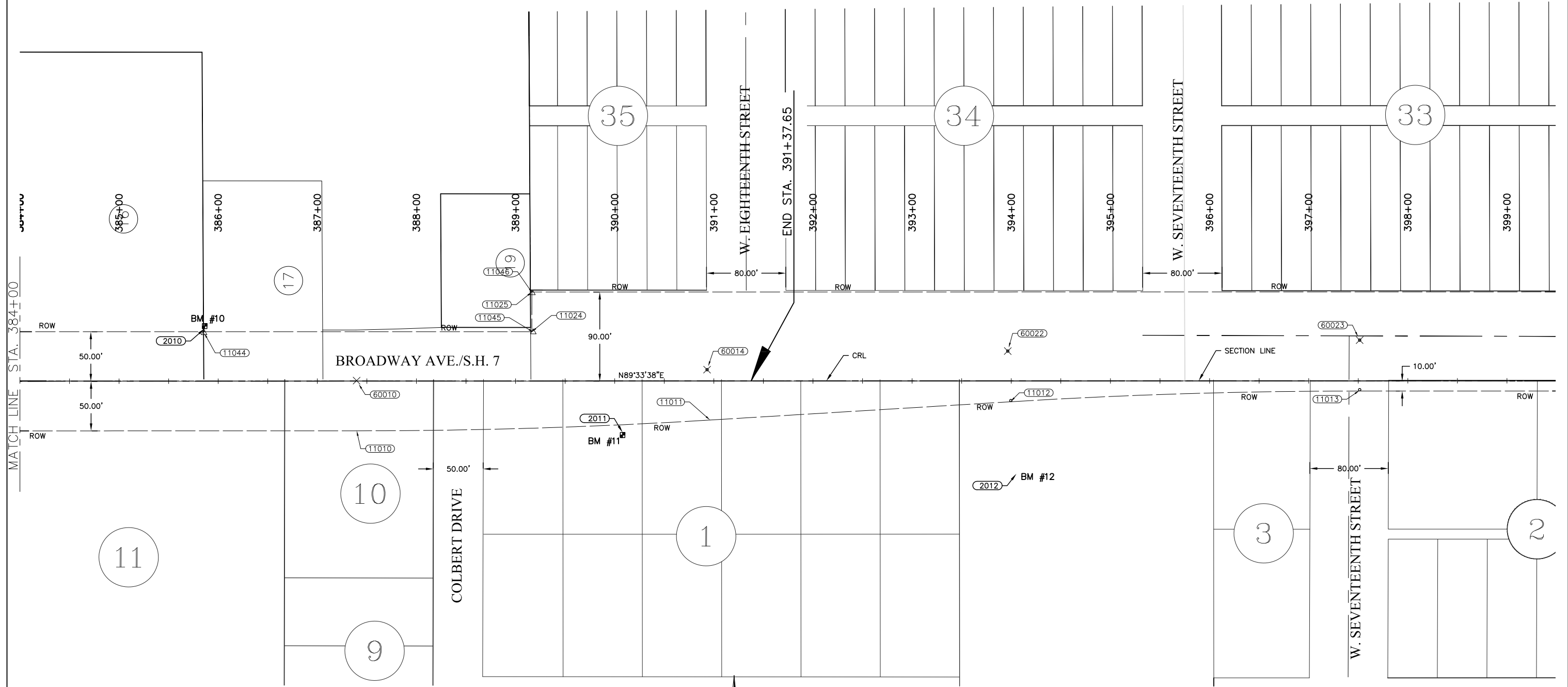


REVISIONS		
REV. NO.	DESCRIPTION	DATE

SEC. 33, T1N, R3E, I.M.

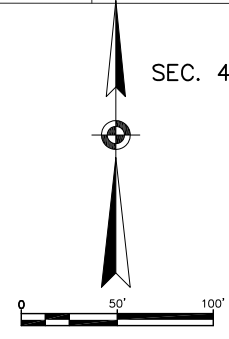
SEC. 4, T1S, R3E, I.M.



STA. 385+85.90  
55.36' OFFSET LEFT  
BENCH MARK NO. 10  
IRON PIN (3/8")  
ELEV.= 966.672  
N 428449.8457  
E 2272019.3342

STA. 390+07.08  
53.62' OFFSET RIGHT  
BENCH MARK NO. 11  
IRON PIN (3/8")  
ELEV.= 981.540  
N 428344.0940  
E 2272441.3420

STA. 394+04.57  
91.72' OFFSET RIGHT  
BENCH MARK NO. 12  
IRON PIN (3/8")  
ELEV.= 985.524  
N 428309.0524  
E 2272839.1116



SULPHUR SIDEWALK IMPROVEMENTS SURVEY DATA SHEET STA. 384+00 TO 399+50		Drawn	J ALEX	7/27/17
CITY OF SULPHUR BROADWAY - CHARLES F. COOPER MEMORIAL ROAD TO 12TH STREET		Design	WTM	7/27/17
STATE OF OKLAHOMA		Checked	WTM	7/27/17
DEPARTMENT OF TRANSPORTATION DIVISION 7		JOB NO. 210101		
SHEET NO. 8 OF 34				